

SOLID UPPER CONTROL ARM BUSHINGS

MOTORSPORTS
ORIGIN



Owner's manual for : **Honda/Acura cars**

Owner's Manual

*Thank you for purchasing **Orijin Motorsports** solid upper control arm bushings.
We are confident that this product will enhance your driving pleasure.
We are proud to help you achieve your goals in the search for speed.*

*Please carefully read all information contained in this document before installing
or using this product. This product is intended for **OFF-ROAD USE ONLY!!**
This product may not be installed on vehicles driven on public roads in most
countries.*

If you do not agree to the terms mentioned in this document do not use this product.

CONTENTS

Page :

- Notice and information	2
- Installation instructions	3-4-5
- Warranty information	5
- Diagrams	6

NOTICE AND INFORMATION

Please carefully read all the information on this document before installing or using this product.

-Do not install the product if there are any missing parts or the product appears to have been damaged.

-Installing suspension parts requires specialized skills. This procedure should only be done by a licensed mechanic.

-Do not install this product in any other vehicle other than those specified in this document. Doing so could result in damage to the vehicle or this product and or personal injury or death.

-Installation of this product may void your factory warranty. Please check with your dealership for details.

-Misuse or improper installation of this product may damage it or shorten its life, please carefully follow the instructions in this manual for installation. You may contact Orijin Motorsports support by email or phone for additional information.

- Orijin Motorsports assumes no responsibility for any damage, however incurred, to either person or property resulting from the use of this product.

!!! WARNING !!!

-This product is intended for **OFF-ROAD USE ONLY!!**

This product may only be installed and/or used on a race, show or off-road vehicles.

!!! WARNING !!!

This product may not be installed on vehicles driven on public roads in most countries.

-The installer assumes all liability for the installation of this product.

!!! WARNING !!!

-This product changes the suspension dynamics of the vehicle, improper use may result in instability of the vehicle and or dangerous behavior. Always stay alert when performance oriented driving, of the status of the vehicle and changes in its behavior.

INSTALLATION INSTRUCCIONS**Installation instructions****!!! WARNING !!!**

Always apply technical security rules to every step of the installation. Installation should only be performed by a licensed mechanic or with the supervision of.
Follow manufacturer specifications for removal and installation of vehicle components.

Procedure:

- Remove vehicle upper control suspension arm
- Disassemble control arm for stock bushing removal
(Pass this step if control arm as already been prepared to receive other than oem bushings)
- Carefully remove "oem" rubber bushing with it's outer metal sleeve without damaging the exterior sleeve in the car manufacturer recommended method. (usually with the help of a press or by burning the rubber and then cutting it's retainer sleeve)

CAUTION - Always be careful when working with power tools and fire, apply appropriate precautions.

- Remove any dirt, residue or rust that is present inside of the main sleeves by the use of grit papers or other cleaning tools.
- Apply mechanical quality grease to all components before installation. This will greatly enhance their durability and will facilitate ulterior removals.

Individual unit assembly

- Verify that there are no missing parts and that the product has not been damaged in any way.
- Insert 1 bushing in the main sleeve by hand as shown in following illustration. The use of a light hammer and a plain surface might be required.
- Repeat the procedure for the other side and all the other sleeves. Don't forget to use correct lubrication everywhere on the contact surfaces to extend bushing's life.
- Insert metal sleeve in all the already assembled units.
The metal sleeve should slide in without too much restriction .



INSTALLATION INSTRUCCIONES

The completed units should be able to rotate without excessive force around the interior metal sleeve that was part of the product.

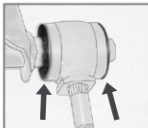
Reassembly of the units in the control arms

-Assemble the individual units in the control arms in the same position as they were when removed.
(use following illustrations as reference)



Only for Prelude 1988-1991

Assembly requires inside and outside washers for each individual units.
(refer to side illustration)



-Install the completed control arms on the car and make sure to use manufacturer torque specifications.

-Verify that everything is correctly installed and that every part was used.

INSTALLATION INSTRUCCIONS**After installation on vehicle...**

CAUTION- The alignment of the vehicle might change during installing of suspension components, please take your vehicle to an alignment shop for reference values and check with the manufacturers specs if needed.

CAUTION- Drive slowly and pay attention to any unusual details for a certain period of time to make sure that everything was properly installed.

CAUTION- Louder road noises and discomfort may arise when using solid bushings.

Orijin Motorsports team thank you and hope you will enjoy driving your vehicle equipped with our race solid bushings.

LIMITED WARRANTY

Orijin Motorsports will warranty for the period of 1 year from original purchase all it's products against defects in manufacturing and materials.

Orijin Motorsports is not responsible for expenses incurred for labor, personal injury or inconvenience.

Orijin Motorsports sole responsibility is to offer a replacement product or to repair the damaged product.

Orijin Motorsports does not warranty products damaged by improper installation, misused or used public roads. Orijin Motorsports products may not be used on any vehicle that is driven on public roads.

INSTALLATION DIAGRAMS

Diagram for Preludes 1988-1991 installation

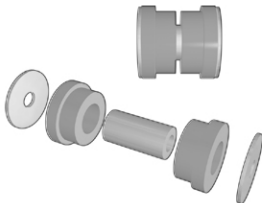


Diagram for all other vehicles

